

Defender™ walkway systems

Defender walkways are always ready, providing safe, swift and easy access to roof-top plant equipment for personnel without any specialised height safety training.

Designed and tested in a **NATA™-accredited** fall prevention laboratory, Defender walkways fully comply with the **Australian National Construction Code** (formerly the BCA), **AS 1657** requirements, **OHS legislation** and **state regulations**.

Defender ... independently certified safety

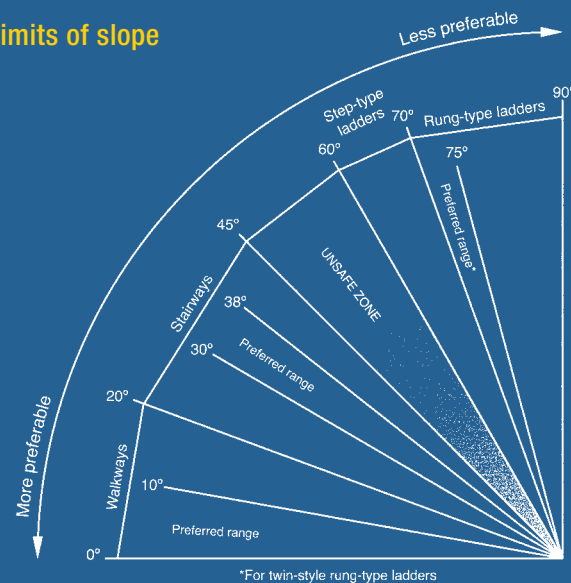
Accredited with **StandardsMark™** and **CodeMark™** quality certification, Defender access and safety equipment provides superior strength and reliability – every time.

And because a walkway is only as good as its configuration and installation, Defender is tailor-made to suit your site and installed only by factory-trained technicians.

CONTACT US TODAY FOR MORE INFORMATION

Ensuring a work environment is safe and complies with Australian Standards and OHS legislation requires the installation of the correct equipment. AS 1657 requires that the means of access shall be selected from the following limits of slope, and considered in the hierarchical order given:

Limits of slope



Defender's wide range of equipment includes all the above means of access.

Other Specifications Guides in the **DEFENDER™** series:

- | | |
|-------------------------|-------------------------------|
| Access Hatches | Rung Ladders |
| Cooling Tower Platforms | Staircases |
| Guardrails | Static Lines & Rail Systems |
| Landings & Platforms | Step Type Ladders |
| Roof Anchors | Internal & Suspended Walkways |



AS 1657 Approved

AS 1657 is the Australian Standard for the design, construction and installation of fixed platforms, walkways, stairways and ladders. This standard underpins Defender's performance.

ISO 9001 Quality

ISO 9001 is by far the world's most established quality framework, currently being used by over 750,000 organisations in 161 countries. This standard assures Defender's quality.

NATA™ Accredited Testing

NATA is the authority that provides independent assurance of technical competence through a proven network of best practice industry experts. The criteria for determining a facility's competence are based on the relevant international standard (e.g. ISO/IEC 17025, ISO 15189, ISO/IEC 17020). NATA provides assessment, accreditation and training services to laboratories and technical facilities throughout Australia and internationally.

CodeMark™ – National Construction Code Approved

The CodeMark scheme recognises Defender's compliance with the National Construction Code (formerly the BCA).

Get it done right, first time, for less.
Defender equipment and installation is extraordinarily cost-effective. Why?
Because smart design shouldn't cost extra.

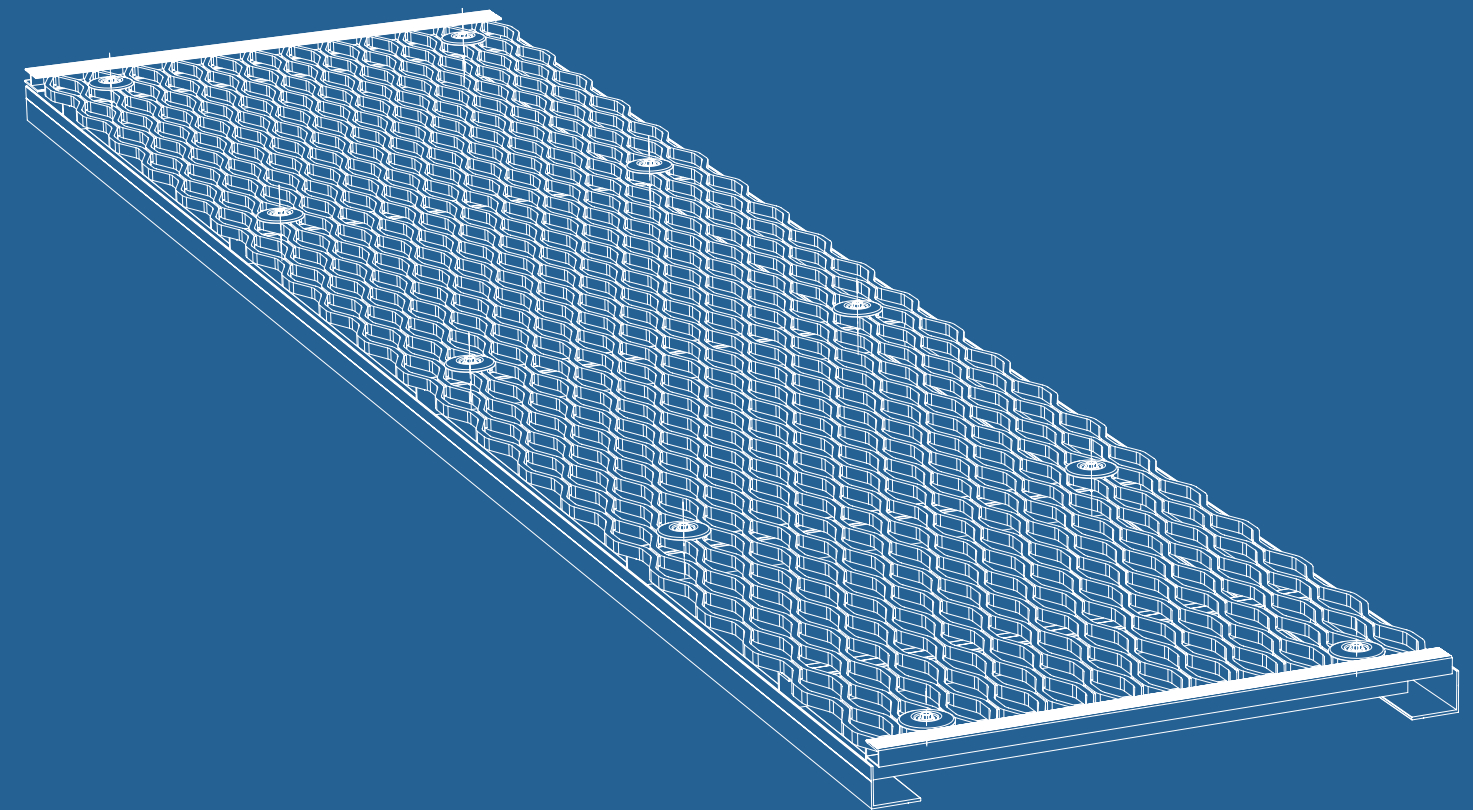
**CALL US TODAY ON 1300 013 794
TO ARRANGE A VISIT FROM A
CERTIFIED DEFENDER™ CONSULTANT**



Walkways

SPECIFICATIONS GUIDE

DEFENDER™
Independently certified safety



DEFENDER™
Independently certified safety

To order, receive a quote, or for more information contact us today at:

enquiries@workplacedefender.com.au
or call 1300 013 794

www.workplacedefender.com.au

Certified Defender™ Installer:

**workplace
access&safety®**

the fall prevention specialists

Telephone 1300 552 984
www.workplaceaccess.com.au



www.workplacedefender.com.au

Defender™ walkways

Walk along a Defender walkway and we guarantee you'll sense its inherent stability. There's no bouncing, no contact with the roof sheeting and a grip that offers real security.

Tough, yet extraordinarily gentle on roofs, Defender sets the benchmark in safety and durability but the secret to its performance lies in a thousand details. Little things like fewer roof penetrations, extra bearers, lab-tested slip-resistance, seamless joins, coloured compliance plates that withstand the Australian weather, and independently certified quality control.

It all adds up to safe, manageable access across a leak-free roof. Not just now but for years to come.

Walkway system and fixings

Figure 1. Walkway system with grating detail

- > The clear width of the walkway shall be at least 600mm.
- > Any gap between adjacent made up sections of grated floors shall not exceed 10mm.
- > A toe board shall be provided at the edge of a walkway where an object could fall more than 2000mm.
- > Walkways shall be designed for the dead load of the designed structure plus a minimum superimposed live loading of 2.5kPa uniformly distributed.

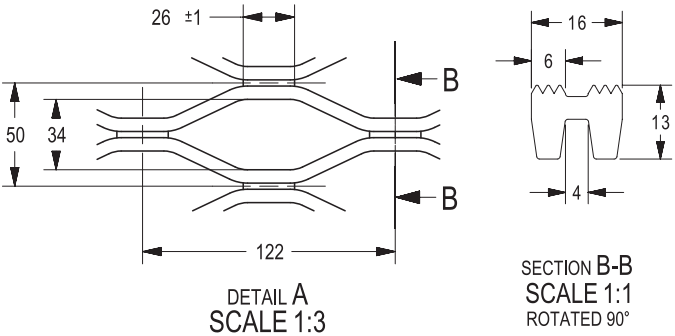
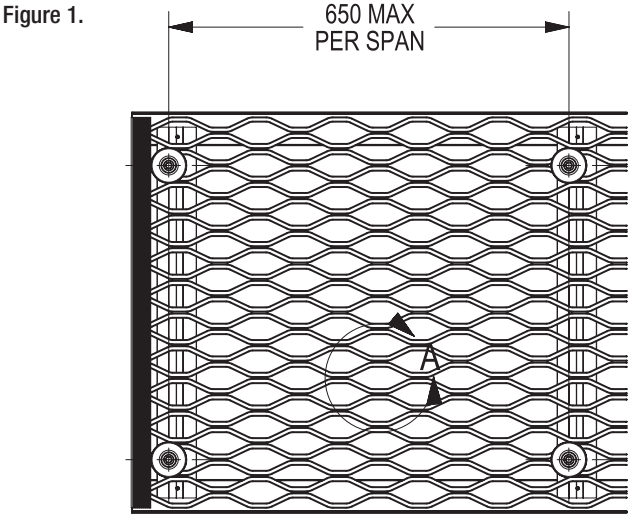


Figure 2. Fixing sealing detail

- > Each surface penetration and fixing is protected by layers of silicone sealing, as depicted in figure 2.

Independent certification to Australian Standards

- > Walkway system shall be independently certified to AS 1657 by a member of the Association of Accredited Certification Bodies (SAI Global™ or equivalent).



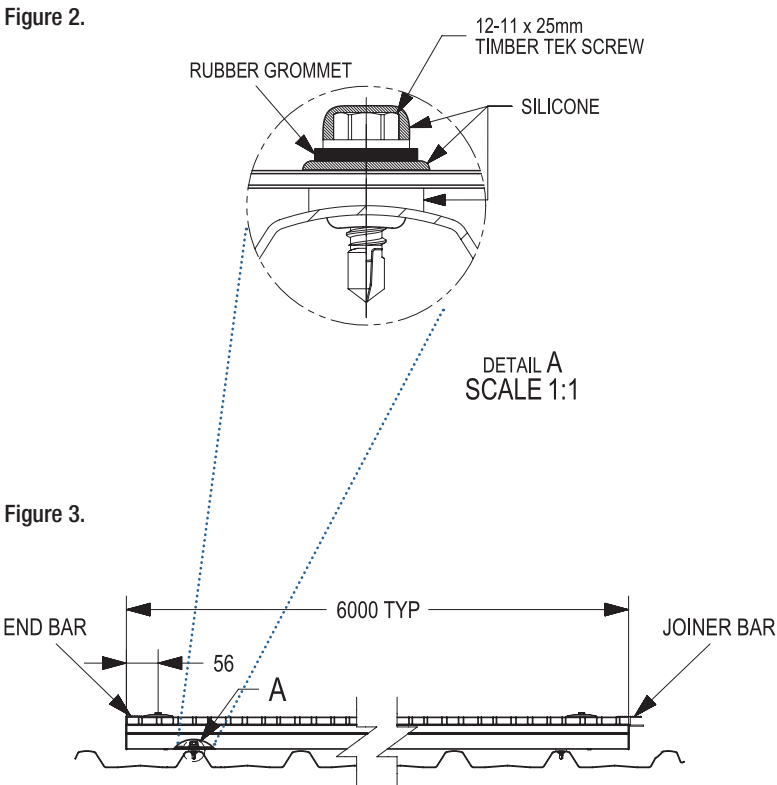
- > ISO 9001 design certification to ensure consistent delivery of walkways that meet OHS requirements and minimise the incidence of roof leaks.



Trip hazards controlled at terminations and joins

Figure 3. Installation on track, with end bar and joiner bar

- > Joiner cap to be fitted where any walkway module adjoins another walkway section.
- > End cap to be fitted where walkway terminates.



Every Defender system is individually configured to suit your site and the way your people work. No matter the roof type – steel deck, asbestos or brown-built – there's a Defender walkway system to suit.

Accredited with *StandardsMark™* and *CodeMark™* quality certification, Defender access and safety equipment is designed by engineers, tested in a *NATA™-accredited* facility and installed by Defender Certified Installers.

Most importantly, the result is strong, reliable equipment that delivers fully compliant access and height safety.

Walkways for inclines

- > From 0 to 7 degrees, walkways are to be fixed onto the flat roof surface. (See Figure 4.)
- > When traversing inclines ranging from 7 to 20 degrees, walkways are to be levelled over the flat roof surface. Provide guardrail at the lower side. (See Figure 5.)
- > When ascending the areas with gradients ranging from 7 to 20 degrees, install cleats to the walkway at intervals prescribed in AS 1657 to allow pedestrians to walk up the incline without slipping. (See Figure 6.)
- > Where guardrails are provided on both sides of a walkway, the clear width of the walkway measured between the innermost guardrails shall not be less than 550mm.
- > The smaller given dimension of any opening shall not exceed 40mm and the area of any opening shall not exceed 5000mm².

Slip resistance tested in a NATA accredited lab

- > Tested and certified to meet AS/NZS 4568 by wet pendulum test to minimum R10 by a NATA-accredited laboratory.

Corrosion resistance

- > Manufactured from non-corrosive grade 6063 aluminium. All steel components to be hot-dipped galvanized.

Demonstrably competent installers

- > Height safety installers to demonstrate competency through training delivered by a registered training organisation.
- > Independent certification to show the walkway system meets the requirements of the National Construction Code (formerly the BCA) by the CodeMark Building Certification Scheme or an independent registered building certifier.
- > Installation performed by organization independently certified to AS/NZS 4801 Standard for Health and Safety Management Systems.

Environmental accreditation

- > Manufacture and construction to be conducted by an organisation independently certified to satisfy the ISO 14001 Environmental Management System, recognising the management of primary environmental issues.



Figure 4. Walkway

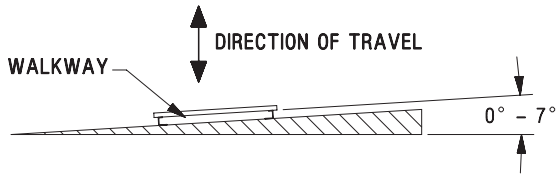


Figure 5. Levelled Walkway

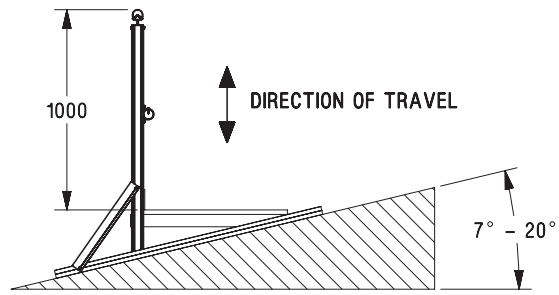


Figure 6. Walkway with Cleats

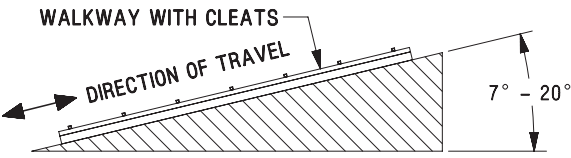
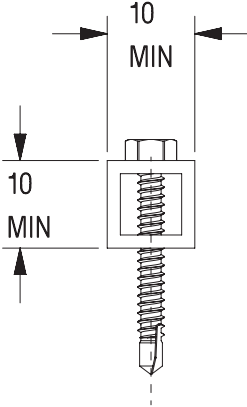


Figure 7. Cleats



Recommended designer, manufacturer, installer and certifier:

workplace access&safety®

Telephone 1300 552 984
www.workplaceaccess.com.au

DEFENDER™

© Copyright Workplace Access & Safety Pty Ltd. This material is subject to copyright and is provided to you subject to the strict condition that it must not be reproduced or communicated to the public in whole or substantial part without the prior written permission of the copyright owner. If and when such permission is granted, this material may only be reproduced in its entirety, without deletions, omissions, amendments or variations, unless express written permission otherwise has been granted by the copyright owner.

TITLE: DEFENDER™ – WALKWAYS STANDARD

DWG. No. SM-004

REV A

SHEET 1 OF 3 SCALE: NONE

SIZE A3