

Defender™ walkway systems

Defender walkways are always ready, providing safe, swift and easy access to rooftops and plant equipment for personnel without any specialised height safety training.

Designed and tested in a **NATA™-accredited** fall prevention laboratory, Defender walkways fully comply with the **National Construction Code** (formerly the BCA), **AS 1657** requirements, **OHS legislation** and **state regulations**.

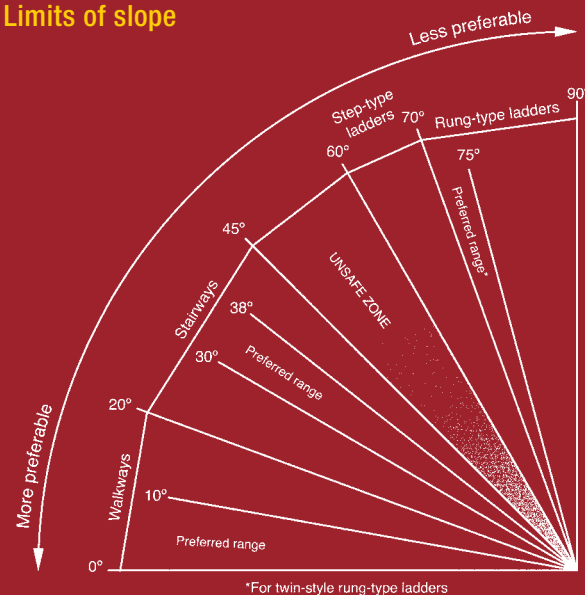
Defender ... independently certified safety

Accredited with **StandardsMark™** and **CodeMark™** quality certification, Defender access and safety equipment provides superior strength and reliability – every time.

And because a walkway is only as good as its configuration and installation, Defender is tailor-made to suit your site and installed only by factory-trained technicians.

Ensuring a safe work environment requires full compliance to **Australian Standards** and **OHS legislation**. The **AS 1657** Standard requires that the means of access shall be selected from the following limits of slope, and considered in the hierarchical order given:

Limits of slope



Defender's wide range of equipment includes all the above means of access.

Other **DEFENDER** safety products in the series:

Access Hatches

Cooling Tower Platforms

Guardrails

Landings & Platforms

Roof Anchors

Rung Ladders

Staircases

Static Lines & Rail Systems

Step Type Ladders

Internal & Suspended Walkways



AS 1657 Approved

AS 1657 is the Australian Standard for the design, construction and installation of fixed platforms, walkways, stairways and ladders. This standard underpins Defender's performance.

ISO 9001 Quality

ISO 9001 is by far the world's most established quality framework, currently being used by over 750,000 organisations in 161 countries. This standard assures Defender's quality.

NATA™ Accredited Testing

NATA is the authority that provides independent assurance of technical competence through a proven network of best practice industry experts. The criteria for determining a facility's competence are based on the relevant international standard (e.g. ISO/IEC 17025, ISO 15189, ISO/IEC 17020). NATA provides assessment, accreditation and training services to laboratories and technical facilities throughout Australia and internationally.

CodeMark™ – National Construction Code Approved

The CodeMark scheme recognises Defender's compliance with the National Construction Code (formerly the BCA).

Get it done right, first time, for less. Defender equipment and installation is extraordinarily cost-effective. Why? Because smart design shouldn't cost extra.

**CALL US TODAY ON 1300 013 794
TO ARRANGE A VISIT FROM A
CERTIFIED DEFENDER™ INSTALLER**

Walkways

CERTIFIED INSTALLATION



Independently certified safety

Quality certified design and installation

Designed and installed for full compliance to Australia's National Construction Code, AS 1657 and ISO 9001 quality and safety standards. Suitable for all popular roof types, including steel deck, brown-built and asbestos roofs.



Tough and durable intermediate supports

Track mounts with robust interval supports bring added stability. Manufactured from non-corrosive grade 6063 aluminium.

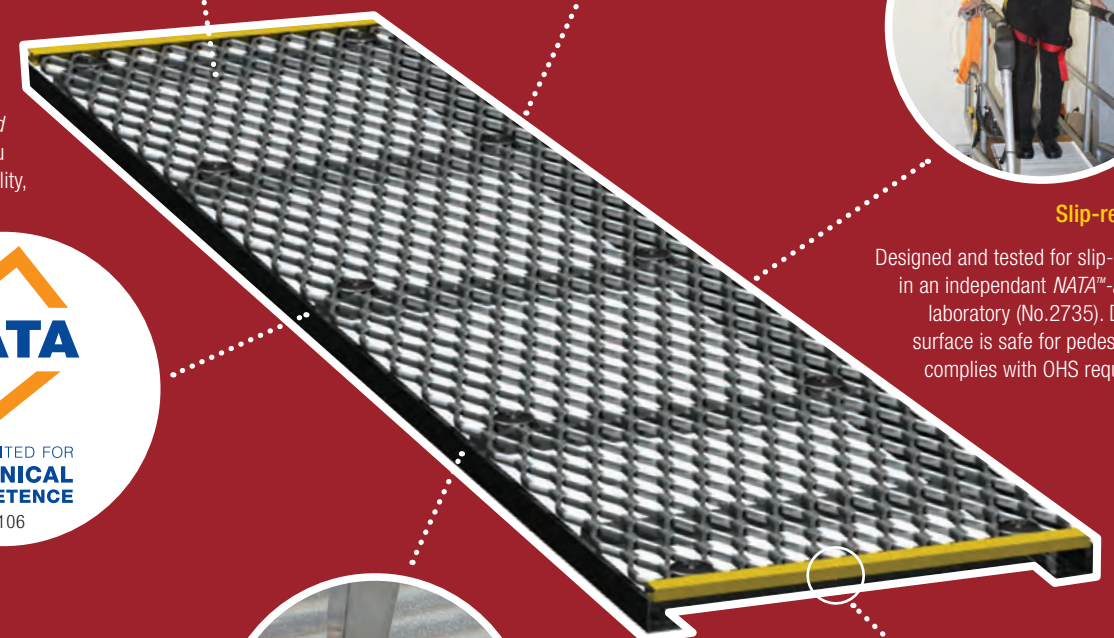


Slip-resistance

Designed and tested for slip-resistance in an independent NATA™-accredited laboratory (No.2735). Defender's surface is safe for pedestrians and complies with OHS requirements.

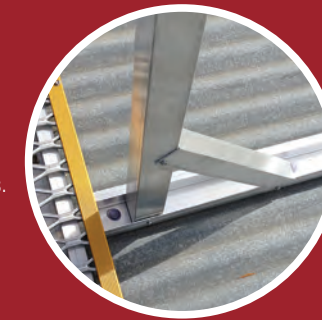
Rigorously tested for a robust system

Tested in a NATA™-accredited fall prevention laboratory, you can count on Defender's quality, strength and reliability.



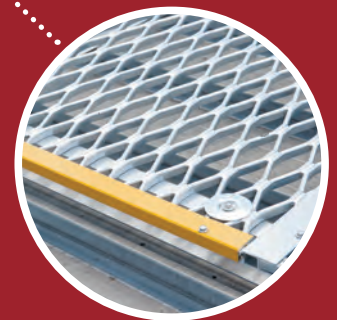
A leak-free roof with 73% fewer penetrations

The clever Defender walkway structure means far less risk to your roof, requiring 73% fewer fixings/screws than most conventionally-mounted walkways. Each fixing/screw is finished with a silicone sealant to prevent corrosion and leaks.



The complete system

Installed with matching joiners, end bars and intermediate supports to make a complete system free from trip hazards.



Independently certified safety

To order, receive a quote, or for more information contact us today at:

enquiries@workplacedefender.com.au

or call 1300 013 794

www.workplacedefender.com.au

Certified Defender™ Installer:

**workplace
access&safety®**

the fall prevention specialists

Telephone 1300 552 984

www.workplaceaccess.com.au



**Assured Compliance for
Optimal Safety**

www.workplacedefender.com.au

Defender™ Walkway System

Walk along a Defender walkway and we guarantee you'll sense its inherent stability. There's no bouncing, no contact with the roof sheeting and a grip that offers real security.

Tough, yet extraordinarily gentle on roofs, Defender sets the benchmark in safety and durability, but the secret to its performance lies in a thousand details.

Little things like fewer roof penetrations, extra bearers, lab-tested slip-resistance,

seamless joins, coloured compliance plates that withstand the Australian weather, and independently certified quality control.

It all adds up to safe, manageable access across a leak-free roof. Not just now but for years to come.

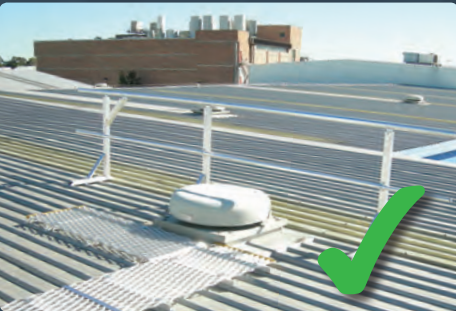
Call 1300 013 794 today to speak to a Certified Defender™ Installer.



A thousand details add up to safe, manageable access across a leak-free roof.

A layout that works where your people work

Walkways provide a safe path of travel to maintenance points and protect your roof from damage.



Defender walkways are configured so all maintenance points on plant and equipment can be accessed without leaving the walkway.



A strong structure for a safe, watertight roof

Check the underside of a walkway for clues about its strength and impact on the roof. The ideal structure spreads the load, minimises penetrations and offers stability.

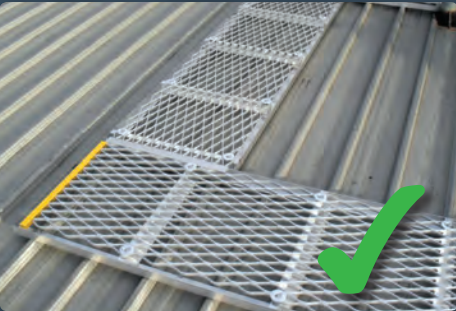


Defender's track members bring it rigidity that prevents flexing and means 73% fewer roof penetrations, while meeting the 2.5kPa (250kg) rating prescribed by AS 1657.

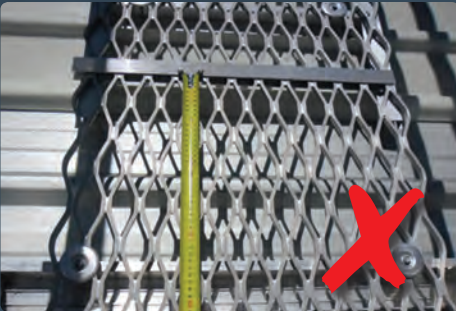


Supports for stability

Walkways need correctly spaced supports to comply with the National Construction Code and achieve the required 2.5kPa rating. The flexing and movement of poorly supported walkways can cause roof leaks.



Defender walkway is independently certified to meet AS 1657 and the National Construction Code. Its structural stability is especially important when spanning brittle surfaces.



The secret of a leak-free roof

A walkway should prevent roof damage rather than create it. The best walkway systems minimise the number of penetrations and incorporate thorough sealing into the installation process.

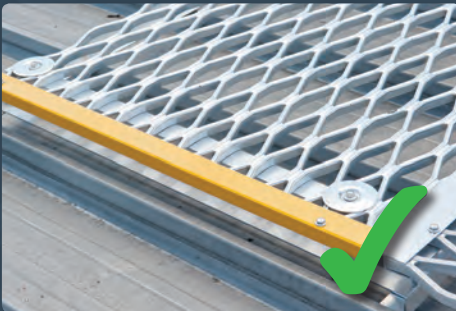


The Defender walkway track system reduces roof penetrations by up to 73% and complete sealing of all roof fixings avoids leaks.

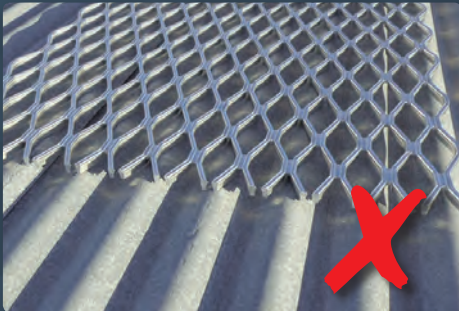


Safe transitions

The ends of walkways present trip hazards and, if left uncovered, sharp jagged edges that could cause injury.



Capped with low-profile, high visibility terminations, Defender walkway ends are easy to see and present a safe transition.



Seamless safety

Trip hazards can be serious at height, so the joining and termination of walkway sections must be carefully considered.



Defender walkways are configured to minimise the number of transitions and joins are as seamless as possible.



Toe-boards protect people below

Walkways carry more than pedestrians – they routinely carry tools, too. Because even a light tool dropped from a rooftop can be lethal, edge protection is important.



Defender walkways incorporate a 100mm toe board along exposed edges to reduce the risk of objects falling onto people below.



Certified, tested and accredited

Be certain fall prevention equipment is genuinely safe and compliant. Demand the rigour that independent certification and accreditation brings to product specification.

Defender walkways are:

- > Slip-resistance tested in a NATA laboratory (No. 2735) to meet outdoor use ratings and the wet oil ramp requirements of R10.
- > Designed to support the dead load of the designed structure plus a minimum super-imposed live loading of 2.5kPa uniformly distributed.
- > Accredited quality and safety compliant, with **StandardsMark™** and **CodeMark™** quality certification.
- > Designed and tested in a **NATA™-accredited** fall prevention laboratory.

