

Defender™ roof anchors

Be certain your fall prevention systems are safe and compliant. Defender roof anchors meet **Australian Standards** for safe and efficient fall restraint, fall arrest and work positioning.

Designed and tested in our **NATA™-accredited** fall prevention laboratory, Defender carries the Five-Ticks **StandardsMark™** acknowledging full compliance to **AS/NZS 5532** so you can be sure you're on the right side of **OHS legislation** and **state law**.

Smart design

The safety of a system hinges on its design. Certified Defender Installers design a system specifically for your rooftop layout to minimise the risk of falls and the potentially lethal pendulum effect.

The system includes all harnesses, static lines & rail systems, lanyards and shock absorbers, design, installation, certification, permit systems, training and rescue plans.

Defender ... independently certified safety

Accredited with **StandardsMark™** certification, Defender access and safety equipment is designed by engineers, tested in a specialised **NATA™-accredited** facility and installed by factory-trained installers.

Most importantly, every Defender system is individually configured to suit your site and the way your people work. The result is strong, reliable equipment that delivers fully compliant access and true safety.

Other **DEFENDER** safety products in the series:

Access Hatches	Staircases
Cooling Tower Platforms	Static Lines & Rail Systems
Guardrails	Step Type Ladders
Landings & Platforms	Walkways
Rung Ladders	Internal & Suspended Walkways

Get it done right, first time, for less. Defender equipment and installation is extraordinarily cost-effective. Why? Because smart design shouldn't cost extra.

CALL US TODAY ON 1300 013 794 TO ARRANGE A VISIT FROM ONE OF OUR CERTIFIED HEIGHT SAFETY SPECIALISTS



AS/NZS 5532 Approved

AS/NZS 5532 is the Australian Standard for the design, construction and installation of roof anchors. Defender anchors are also guaranteed to comply with AS/NZS 1891.



NATA™ Accredited Testing

NATA is the authority that provides independent assurance of technical competence through a proven network of best practice industry experts. The criteria for determining a facility's competence are based on the relevant international standard (e.g. ISO/IEC 17025, ISO 15189, ISO/IEC 17020). NATA provides assessment, accreditation and training services to laboratories and technical facilities throughout Australia and internationally.



Australian Standards Committee Participation

Defender's manufacturer, Workplace Access & Safety, is proud to represent the FMA (Facility Management Association) on the Australian Standards Committee, taking an active role in the development of standards AS/NZS 5532 and AS 1891, and contributing technical expertise for the benefit of the community of industrial safety.



Roof Anchors

CERTIFIED INSTALLATION

DEFENDER™
Independently certified safety

Quality certified design and installation

Designed and installed for full compliance to AS/NZS 5532 and AS/NZS 1891.



Rigorously tested for strength and reliability

Defender roof anchors are stringently tested in an ISO 17025 NATA™-accredited laboratory, undergoing a 10-point test for strength and reliability.



Clearly labelled

All Defender roof anchors are clearly labelled to ensure traceability and display the load rating of the system.



Substrate verification

Each substrate is verified prior to anchor installation. Defender anchors are rigorously tested for installation on a range of substrates.



Fully compliant installation

Anchors installed correctly by Certified Defender Installers, for full compliance to Defender installation instructions.



Fully effective layout and installation

Fully compliant installation plan implemented to ensure distance from brittle surfaces and prevention of the potentially lethal pendulum effect.

DEFENDER™
Independently certified safety

To order, receive a quote, or for more information contact us today at:
enquiries@workplacedefender.com.au
or call 1300 013 794
www.workplacedefender.com.au

Certified Defender™ Installer:
workplace access&safety®
the fall prevention specialists
Telephone 1300 552 984
www.workplaceaccess.com.au



Independently certified safety

www.workplacedefender.com.au

Defender™ Roof Anchors

The safety of a system hinges on its design. Minimising the risk of falls and the potentially lethal pendulum effect relies on the correct layout for your rooftop and plant.

The system includes all harnesses, static lines & rail systems, lanyards and shock absorbers, design, installation, certification, permit systems, training and rescue plans.

All Defender roof anchor systems are designed by qualified designers and installed by Certified Defender Specialists for safety, compliance, quality and reliability.

Call 1300 013 794 today to speak to a Certified Defender™ Specialist.

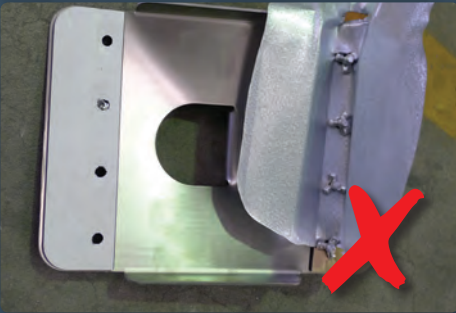


Tested in a NATA lab accredited for AS/NZS 5532

Defender anchors are tested in an ISO 17025 NATA facility accredited to AS/NZS 5532. Ask to see the test documents and accreditation certificates.



The AS/NZS 5532 drop test benchmarks the performance of roof anchors in a realistic simulation.



Every Defender batch tested to AS/NZS 5532

Defender's performance is underpinned by rigorous testing with every batch tested to AS/NZS 5532



Every batch of Defender anchors is tested to AS/NZS 5532 and support the load without cracking. Anchors with claimed AS/NZS 1891 compliance may still catastrophically fail the realistic AS/NZS 5532 drop test.



Certified Defender Installers see safety performance through to the site

Because no anchor performs properly without the right installation, Defender is fitted by factory-trained Certified Defender Installers.



A correctly installed Defender anchor is ready to save lives but even the best anchor is unsafe with poor installation.



Point of comparison:

We verify the substrate before installing anchors. And only install onto substrates we have tested the product on. Others don't and that's why they may rip out of the roof if deployed.

Tested to perform on your roof type

Defender anchors are tested on different roof surfaces so you can be sure they will perform on your site.



Not all anchors are capable of saving lives on all roof types – Defender is matched to your roof.



The right anchor in the right place

Put an anchor in the wrong place and there's a risk users can fall and hit the side of the building, with potentially lethal consequences.



Your Defender height system designer will assess your site and position anchors to prevent lethal falls – whether over the edge or through brittle surfaces like skylights.

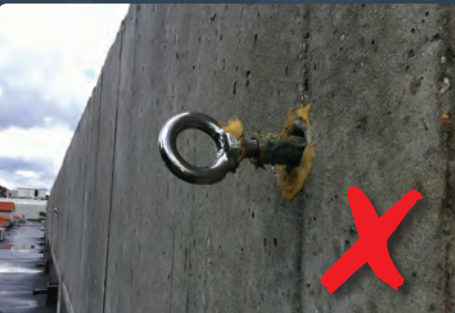


Defender tested in situ for real-world performance

Anchors should be tested in-situ to 50% of their load rating to confirm their stability.



Defender anchors are load-tested on site to 50% of their load rating. Untested anchors can pull out if the fixings are inadequate.



Safety buffer around brittle surfaces

Anchors positioned too close to brittle surfaces like skylights make it difficult for users to clip-on safely.



Defender height safety specialists will design your anchor layout so users are never forced to clip on close to brittle surfaces.



Certified, tested and accredited

Be certain fall prevention equipment is genuinely safe and compliant. Demand the rigour that independent certification and accreditation brings to product specification.

Defender roof anchors are:

- > StandardsMark™ certified to AS/NZS 5532 and AS 1891
- > Designed and tested in a NATA™-accredited fall prevention laboratory.
- > Manufactured by Workplace Access & Safety, representative of the FMA (Facility Management Association of Australia), on the Australian Standards Committee for height safety.

